

BASE BIS LED IP44

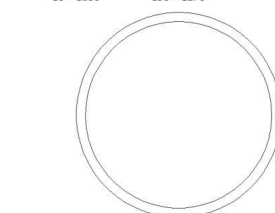
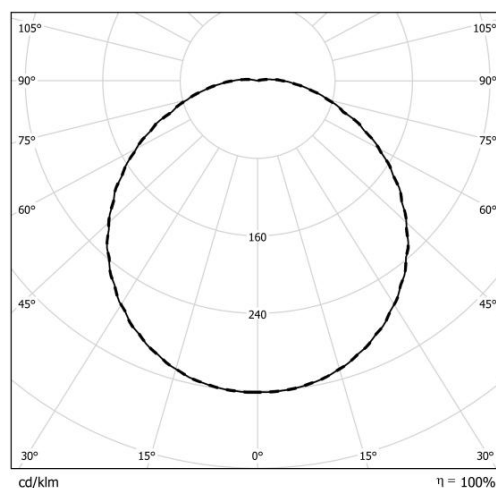
5373100

ES-SYSTEM



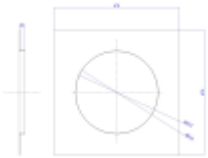
A compact, white plastic ceiling-recessed luminaire with an increased ingress protection rating of IP44. A highly permeable PC diffuser with uniform light distribution that is resistant to yellowing. A microwave motion and light sensor makes it possible to precisely set the following parameters: 5 thresholds for switching on the luminaire depending on the influence of daylight, 5 detection range variants, 7 variants of operating time after motion detection. MASTER version - for controlling up to 15 SLAVE luminaires. Luminaire type: Plafonds & Sconces, Increased ingress protection; Mounting type: recessed mounting; Mounting location: ceiling; Luminous flux: 1400lm; Luminous efficacy: 93lm/W; Correlated color temperature: 4000K; Color rendering index (CRI): >80; Median useful life: L70B50 - 72000 h, L80B50 - 45000 h, L90B50 - 22000 h; Photobiological risk group: 0; Luminous intensity distribution direction: direct; Frame color: white, in-mass colored; Luminous intensity distribution: very wide; Luminous intensity distribution geometry: symmetrical; Unified glare rating (UGR): 18 - 23; Angle 65° luminance: <3000; Voltage: 230V AC; Power: 15W; Wired lighting control: ON/OFF; IP Code: IP44; IK Code: IK08; IEC protection class: II; Diffuser material: PC; Diffuser type: opal; Housing material: PC; Luminaire shape: round; Permissible ambient temperature range: from 0°C to 25°C; Circuit load capacity (B10): 23; Connector type: 3-pole; Circuit load capacity (B16): 38; Power Supply: Integrated with the LED module; Dimensions: Height: 90mm, Diameter: 332mm; Ceiling opening dimensions: 310mm; Sensor: MASTER motion and dusk sensor; Weight: 0.95kg; Energy efficiency class: A+; Tilted: No; Registered design: No; EAN: 5901155726102;

Luminaire type	Plafonds & Sconces, Increased ingress protection
Mounting type	recessed mounting
Mounting location	ceiling
Luminous flux	1400lm
Luminous efficacy	93lm/W
Correlated color temperature	4000K
Color rendering index (CRI)	>80
Median useful life	L70B50 - 72000 h L80B50 - 45000 h L90B50 - 22000 h
Photobiological risk group	0
Luminous intensity distribution direction	direct
Frame color	white, in-mass colored
Luminous intensity distribution	very wide
Luminous intensity distribution geometry	symmetrical
Unified glare rating (UGR)	18 - 23
Angle 65° luminance	<3000
Voltage	230V AC
Power	15W
Wired lighting control	ON/OFF
IP Code	IP44
IK Code	IK08
IEC protection class	II
Diffuser material	PC
Diffuser type	opal
Housing material	PC
Luminaire shape	round



Permissible ambient temperature range	from 0°C to 25°C
Circuit load capacity (B10)	23
Connector type	3-pole
Circuit load capacity (B16)	38
Power Supply	Integrated with the LED module
Dimensions	Height: 90mm Diameter: 332mm
Ceiling opening dimensions	310mm
Sensor	MASTER motion and dusk sensor
Weight	0.95kg
Energy efficiency class	A+
EAN	5901155726102

Additional accessories



4626018 Mounting plate for soft modular ceilings